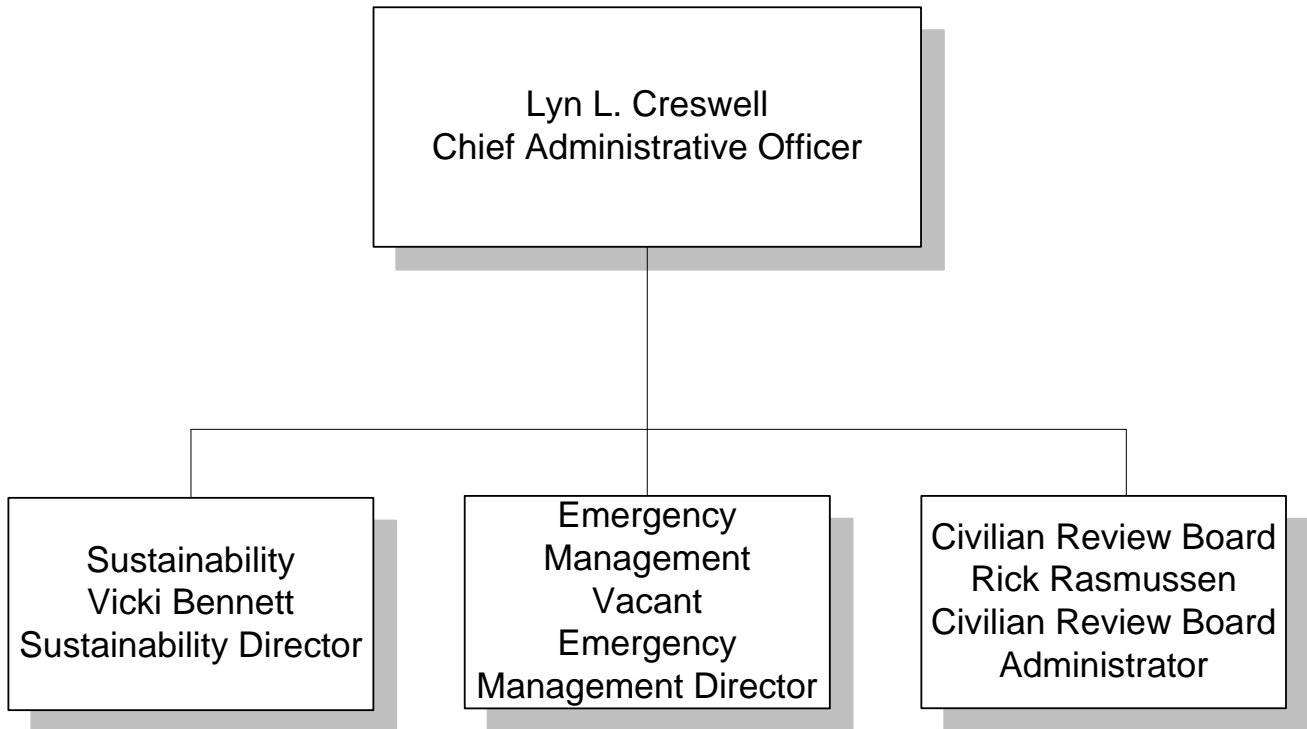


# CHIEF ADMINISTRATIVE OFFICER

Organizational  
Structure  
Fiscal Year 2008-09



Open Space  
Recycling  
Environmental Compliance  
Sustainability

**Office of the Chief Administrative Officer**

Lyn L. Creswell, Chief Administrative Officer

	FY 2006-07 Actual	FY 2007-08 Adopted Budget	FY 2008-09 Adopted Budget	Explanation of Changes
Full Time Equivalent Positions	-	-	9.50	Transfers of functions and positions from Public Services and Management Services; creation of new positions.
<b>DEPARTMENT BUDGET</b>				
Personal Services			979,935	
Operations and Maintenance Supply			19,562	
Charges for Services			281,649	
Capital Outlay			1,500	
<b>Total Office of the CAO</b>	-	-	<b>1,282,646</b>	
<b>PROGRAM BUDGET</b>				
CAO Operations			409,023	
Sustainability			592,930	
Emergency Management			147,665	
Civilian Review Board			133,028	
<b>Total Office of the CAO</b>	-	-	<b>1,282,646</b>	
<b>FUND SOURCES</b>				
General Fund	-	-	1,282,646	
<b>Total Office of the CAO</b>	-	-	<b>1,282,646</b>	