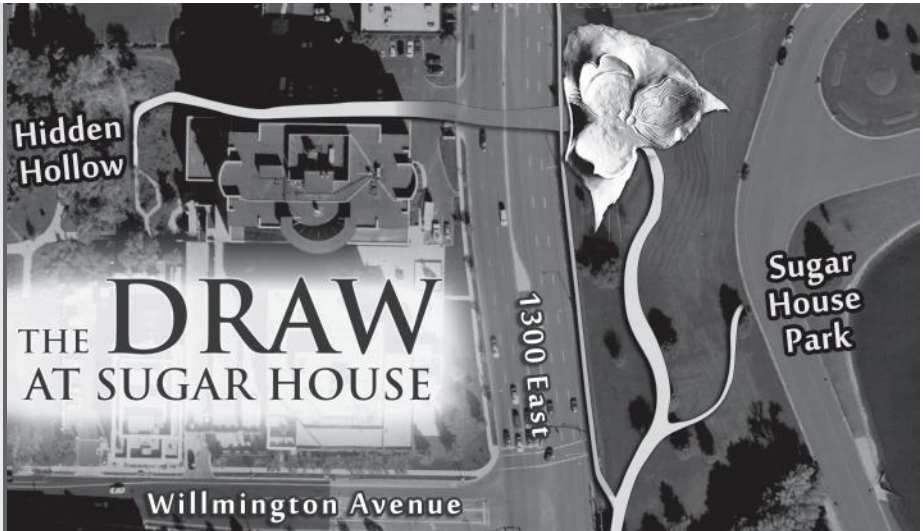




THE MISSION of the Parley's Rails, Trails and Tunnels (PRATT) Coalition is to assist city, county, state and federal agencies and other public and private partners in completing a multi-use trail along I-80 via Parley's Creek Corridor and the Sugar House Rail Spur to connect the Bonneville Shoreline Trail with the Provo-Jordan River Parkway.

A ten-foot wide paved trail is planned that would accommodate bicycles, walkers, joggers, roller-bladers, skateboarders and other non-motorized recreation. The trail will provide an alternative transportation route for commuters who want to access parks, schools, and businesses near the corridor. The crossing and trail will reconnect communities fragmented by the intense urban development, and will provide a safe, alternative way to travel between schools, churches, business districts, public services, parks, and government centers. Every effort will be made to create an accessible trail, in accordance with national transportation standards.

Access to parks and linkage of existing open space will increase recreation opportunities for communities in the corridor and connect the communities to a regional trail system. "Greenway" corridors in other cities have been shown to enhance real estate property values.



A priority for the PRATT Coalition is the completion of "The Draw at Sugar House", a pedestrian crossing connecting Sugar House Park, Hidden Hollow, and the Sugar House Business District, via a canyon-like passageway or "draw," under 1300 East Street.

2008 Summary

- The Environmental Study for the Trail through Parley's Historic Nature Park to Tanner Park has been completed.
- We reviewed alignment options for the Parley's Park trail section, and design is nearing completion.
- Completed the final design and construction documents for the Sugar House Park trail segment.
- Designs for "The Draw at Sugar House" have also been completed, artist Patricia Johanson was hired to help finalize the plans for the Crossing.
- Contributed funds to re-vegetate areas of Parley's Park.

2009 Agenda

- Construct the Trail through Parley's Historic Nature Park to Tanner Park.
- Raise funds for construction.
- Work with Salt Lake County and Salt Lake City to develop an alignment for a temporary trail using City and County streets from Tanner Park to Sugar House Park.
- Construct the Trail from 1700 East to 1300 East, skirting the south edge of Sugar House Park.
- Construct the "The Draw at Sugar House," connecting Sugar House Park to Hidden Hollow Natural Area.
- Make plans to construct the Trail Bridge over the Roper Rail Yard to coincide with construction of UTA's TRAX bridge.

Building Trails by Building Partnerships



The PRATT Coalition was organized on the principle of building community connections. In one sense, that means linking parks, schools, shopping centers and transit nodes by means of a linear parkway. In a greater sense, it means forging a partnership among municipal governments, civic organizations, and public and private agencies to accomplish a common goal. Salt Lake County, through the County Parks & Recreation Division, has taken a lead in developing the first east/west bicycle-and-pedestrian trail in the northern part of the valley. Project Manager Walt Gilmore has divided the eight-mile trail project into five sections or phases. Utah Department of Transportation is managing the funding for all phases of the trail project.

The first two phases were the pedestrian bridges over I-80 and I-215 that connected the Bonneville Shoreline Trail to Salt Lake City's Parley's Historic Nature Park. H.W. Lochner Inc. was hired last spring to design the third segment of Trail, which will pass through the nature park and connect the west-side of the I-215 Bridge to Tanner Park. Construction of this section is expected to be completed by December, 2009.

Phase Four of the trail project was divided into two parts. Stanley Consultants Inc. has completed the final design for Phase Four-A, the Sugar House Park trail between 1700 East and 1300 East St. The Park is owned by the Sugar House Park Authority, which planned for the trail

(continued on Page 2)



History of Parley's Rails, Trails and Tunnels Coalition

For almost a century, Salt Lake City leaders have envisioned a linear park that would connect the mouth of Parley's Canyon to the valley floor. Since 1983, there have been plans for a major east-west pathway between the foothills of the Wasatch Mountains and the Jordan River. In May, 2000 a group of citizens came together to begin developing the Parley's Trail Corridor.

Realizing that many individuals, organizations and governmental entities needed to be involved in such an ambitious project, the group reached out to others interested in developing a greenway through Sugar House and South Salt Lake City. The group grew, and as common goals were discovered, the opportunity to put twenty-five years of planning into action finally arrived. The Parley's Rails, Trails and Tunnels (PRATT) Coalition was formed, named to honor an important figure in Utah's history, Parley P. Pratt, for whom Parley's Canyon and Parley's Creek are named.

Today, the partnership includes Salt Lake City, Salt Lake County, South Salt Lake City, UDOT, UTA, The Sugar House Park Authority, various community councils along the corridor, business interests, and many others working towards creating a greenway from the mountains to the river.

The group credits the Bonneville Shoreline Trail Committee, the Parley's Crossing Committee, and Kids Organized to Protect our Environment (the KOPE Kids) for raising public awareness of the need for safe, off-street bicycle and pedestrian pathways and crossings.

Recommendations for the trail were included in Salt Lake County's Regional Trails Plan and the Salt Lake City Open Space Master Plan.

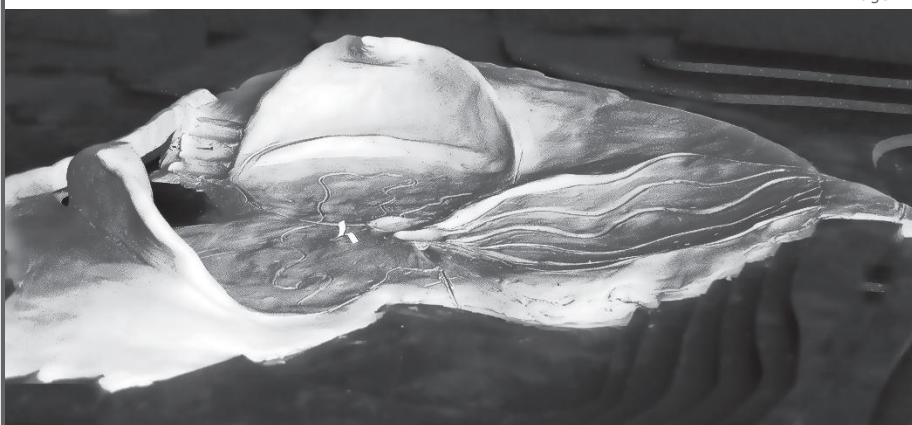
Now the Parley's Crossing is complete and a quarter-mile of trail has been built in Parley's Historic Nature Park. Bike lanes have been marked in the Sugar House

Business District from 1300 East to 900 East Streets. Funding is secured for construction of two more segments of trail between the canyon and Hidden Hollow Natural Area, including the award-winning crossing at 1300 East, the "Draw at Sugar House" and a bicycle/pedestrian bridge across Union Pacific's Roper Rail Yard. The completed trail will connect to the Jordan River Parkway in South Salt Lake.

Parley's Trail is a model for urban trail-building efforts. In coming years, the groundwork laid by the PRATT Coalition will pave the way for a citywide trail system, and provide a critical link in a regional network of bicycle and pedestrian trails called the Wasatch Loop.



A completed section of the trail near the connection to the Bonneville Shoreline Trail



conceptual model of "The Draw at Sugar House" pedestrian crossing

Building Trails by Building Partnerships (continued)

amenity in their recently completed park master plan. Phase Four-B is identified as the 1300 East Crossing. Michael Baker Jr. is the prime consultant, responsible for designing the bridge that will carry 1300 East over a pedestrian passageway between Sugar House Park and Hidden Hollow Natural Area. ArcSitio Design and Artist Patricia Johanson are providing the landscape design for the crossing, known as "The Draw at Sugar House." Construction of both Phases is expected to take place in 2009.

On-street bike lanes and walkways through the Sugar House Commons lead from Hidden Hollow to Fairmont Park. The final and longest section of the Trail is Phase Five, from 1100 East to the Jordan River Parkway. Perkins Engineering with Fehr & Peers Transportation Consultants is providing preliminary plans and an environmental study for this segment, which includes a bicycle/pedestrian bridge alongside UTA's West Valley LRT bridge over the Roper Rail Yard in South Salt Lake City. Plans for the Sugar House rail spur section will take place in coordination with studies that will begin soon for streetcar service to South Salt Lake and downtown Sugar House.

Salt Lake City's First Public Trails Coordinator



This fall, Dan Bergenthal accepted the responsibility of fulfilling Mayor Ralph Becker's campaign promise to develop convenient public transit and non-motorized transportation choices for residents and visitors to the city.

Dan has been participating with the PRATT Coalition for eight years in his role as a transportation engineer for the SLC Transportation Division. Top priority in his new assignment will be to help complete the Jordan River Parkway and Parley's Trail through Salt Lake City. These two trails form an integral part of a regional trail system. The Parley's Trail links to Salt Lake City's extensive on-street bike routes, but most importantly, will connect the Bonneville Shoreline trail to the Jordan River Parkway. The Provo-Jordan River Parkway will soon extend from Utah Lake to the Great Salt Lake and will eventually connect to the newly completed trails on the Legacy Parkway in Davis County. Looking at the bigger picture, the Provo-Jordan River Parkway and Parley's Trails are part of the proposed Wasatch Loop non-motorized trail, which extends for 230 miles, connecting Davis, Morgan, Salt Lake, Summit, Utah, Wasatch and Weber Counties. Dan will also be working to fund and construct other trails proposed in Salt Lake City master plans, such as the City Creek Trail connecting the Provo-Jordan River Parkway to the downtown district, and the 900 South Greenway and Surplus Canal Trail.

In accepting the new position, Dan commented, "I love trails and the outdoors and I'm very excited about this opportunity to work on enhancing the City's trails system. I want SLC to be known as a walkable and bikeable city - a place where people want to live because of the availability of recreational trail opportunities close to home and because it's easy to get around without a car."

The PRATT Board of Directors meets on the fourth Wednesday of each month from 11:30 a.m. to 1:00 p.m. at the Salt Lake County Government Center, 2001 South State Street. Meetings are open and the public is welcome to attend.

YES! I want to help the PRATT Coalition build the Parley's Corridor Trail, a safe and beautiful place for Utahns to bicycle, walk and wheelchair for recreation and transportation.

Enclosed is my tax deductible donation made payable to:

Parley's, Rails, Trails and Tunnels Coalition

P.O. Box 520308

Salt Lake City, UT 84152-0308

Name _____

Address _____

City _____ State _____ Zip _____

Phone () _____ Donation Amount \$ _____

or donate online www.parleystrail.org

